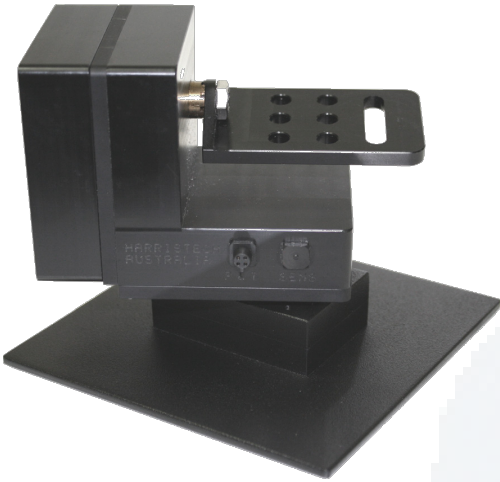


## **H2001WHV - WEATHERPROOF PAN & TILT** **DIRECT VISCA RS232 DRIVE**



- Pan & tilt with direct Sony VISCA serial data drive.
- Direct connection to Axis, Bosch, Indigo Vision etc video server serial data output.
- Seamless I.P. operation over LAN, Wireless LAN, ADSL etc.
- Optional 4 or 6 preset PTFZ memories built in to H2001WHV-P.
- Can be used with existing H22 family of controllers for additional DTMF control & aux switches.
- Can be used with new HarrisTech H17RV-B telemetry system with built in Bosch VIPX I.P. video cards. Can be used with existing HarrisTech H17RV systems.
- H2001WHV fully sealed IP-67.
- Balanced load up to 2kg.
- Optional H2001MB mounting base.



- Available with Sony FCB-EX980P 26x & FCB-EX1000P 36x optical zoom block cameras.
- Camera fully sealed to IP-68.
- Camera purged with high purity dry nitrogen for condensation-free viewing in all weather.
- Option for S-Video output.



  
**harris tech**  
**COVERT ELECTRONICS**

### **HarrisTech**

Unit 3 / 7 King Edward Rd, Osborne  
Park, Western Australia 6017

Phone: (+61 8) 9446 7799

Fax: (+61 8) 9446 7788

Web: [www.harristech.com.au](http://www.harristech.com.au)

Email: [tim@harristech.com.au](mailto:tim@harristech.com.au)